



DAY BLUE

Main Principles

Owner	<i>Anilam Shipping CO.</i>
Manager	<i>WestShips Denizcilik ve Ticaret AS</i>
Type	<i>General Cargo</i>
Built Date	<i>1998</i>
Built Place	<i>The Netherlands</i>
Port of Registry	<i>Belize</i>
Flag	<i>Belize</i>
Class	<i>RINA</i>
Call Sign	<i>V3NC9</i>
IMO Number	<i>9184811</i>
MMSI	<i>312 012 000</i>
LOA	<i>89,80 M</i>
LBP	<i>84,99 M</i>
Breath	<i>13,17 M</i>
Depth	<i>7,15 M</i>
Draft Summer/Winter	<i>5,67/6,17 M</i>
Airdraft	<i>26,50 M</i>
GRT/NRT	<i>2834/1568 MT No</i>
Ice Class	<i>HYDOR</i>
Owners P&I	<i>MWM TBD 645 L6</i>
Main Engine	

Loading Capacities

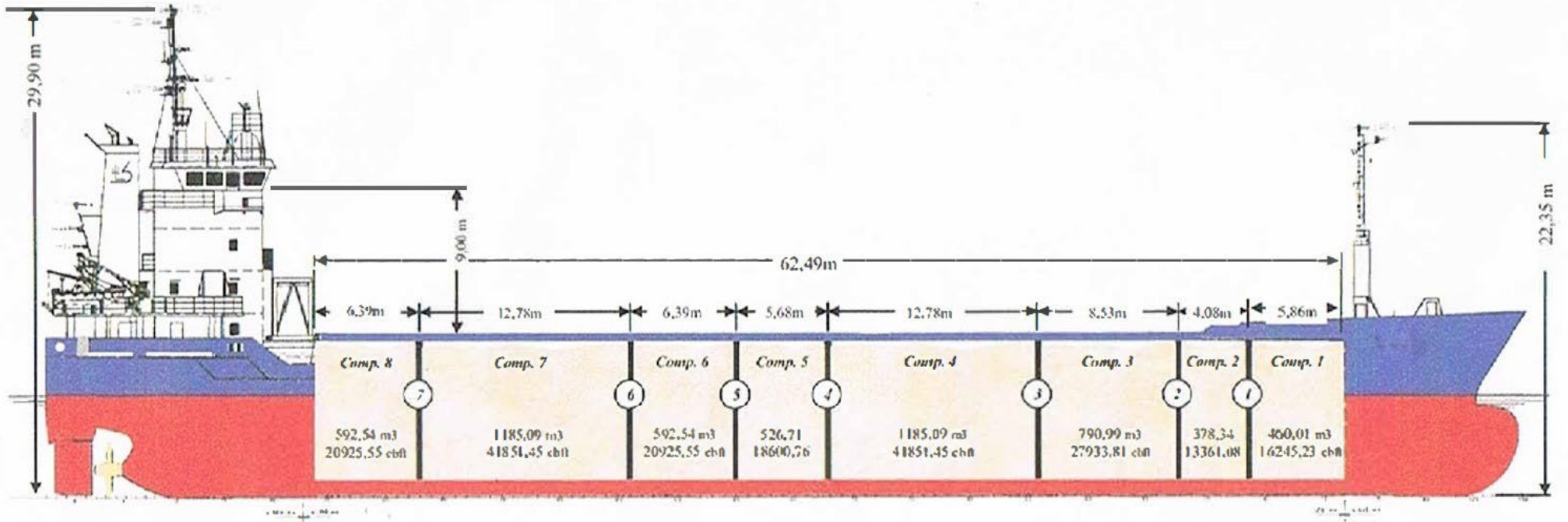
Deadweight	<i>4705 MT</i>		
DWCC Summer/Winter	<i>4450/4350 MT</i>		
Lightship	<i>1384 MT</i>		
Holds	<i>1</i>		
Hold Dimensions	<i>62,49 x 11 x 8,43</i>		
Hold Capacity	<i>201.931 CBFT</i>		
Box/Open Hatch	<i>Yes/Yes</i>		
Hatchcover Type	<i>Pantoon Type-Gantry Crane</i>		
Hatchcover Dimensions	<i>62,7 x 10,1</i>		
Tanktop Strenght	<i>18 T/M²</i>		
Tweendeck	<i>No</i>		
Grain Stowage Fitted	<i>Yes</i>		
Hold Ventilation	<i>Electrical</i>		
CO Fitted	<i>Yes</i>		
Grain Bulkheads	<i>2/Moveable</i>		
	Laden	Ballast	
Speed	<i>10</i>	<i>10,5</i>	<i>kts</i>
Consumption	<i>6,5</i>	<i>6,0</i>	<i>MT MGO incl. Aux Eng</i>

All details are given in good faith but always without guarantee.



MV DAY BLUE

Hold Drawings



VESSEL	TOTAL HOLD CAPACITY	HOLD DIMENSIONS
MV DAY BLUE	201.931 CBFT	62,49 M x 11 M x 8,43 M